

Improving water quality in urban rivers

South Dublin County Council & Dún Laoghaire-Rathdown County Council

The Challenge

- Reduce river pollution by finding misconnected appliances
- Create an efficient, replicable, digital process for inspecting homes

The Benefits

- Targeted action to find misconnected appliances
- Significant reduction in the discharge of polluted water
- 50% cost saving from more efficient process
- Seamless capture and sharing of real-time data
- Easily replicated solution for use elsewhere

Two county councils in Ireland are working together to find and remove hundreds of misconnected household appliances that are disgorging polluted water into local rivers. This EU-funded project is being delivered using a highly efficient, easily replicated ArcGIS process, which has already prevented two million litres of contaminated waste water from polluting Dublin's river environments.

The Challenge

Throughout Europe's urban areas, alarmingly high numbers of rivers and streams are polluted by misconnected pipes at domestic properties. Often unbeknown to homeowners, some washing machines, dishwashers and kitchen sinks empty into surface water drainage systems instead of sewers, causing significant, persistent damage to the biodiversity and ecosystems of urban waterways.

To address this issue in Dublin, South Dublin County Council and Dún Laoghaire-Rathdown County Council joined forces to identify misconnections and improve water quality in two river catchment areas in the county. The project attracted funding from the European Union's LIFE programme and aimed to develop a best practice approach for finding misconnections and improving water quality that could be replicated easily across Ireland and Europe.

The Solution

The project team decided to use Esri's ArcGIS system for the Dublin Urban Rivers LIFE project for three reasons: the widespread use of ArcGIS within the local authority sector; the affordability and perpetuity of the ArcGIS Survey123 app; and the support available from Esri Ireland. The entire end-to-end solution was built using Esri's out-of-the-box templates to make it easy and cost effective for other local authorities to replicate the process.

The Dublin Urban Rivers LIFE project has now been up and running for over two years and the ArcGIS-led project methodology is both firmly embedded and proven to be successful. First, field-based teams use ArcGIS Field Maps to view maps of the surface water drainage network on their mobile devices. Using this app, they lift manholes in residential areas, record signs of pollution in stormwater drains and upload their findings directly to ArcGIS Online.

All locations of pollution are instantly visible to office-based staff, who use an ArcGIS Online web app on their desktops to identify the domestic properties that are associated with each polluted drain. They then conduct further geospatial analysis using satellite imagery to pinpoint high probability houses that have been extended or significantly modified, as these are the most likely properties to have misconnections.

Appointments are scheduled with home-owners at 'high probability' properties. Then, field officers use ArcGIS Survey123 on mobile devices to record data during these house visits, using up to 85 different data fields.

All the data collected is uploaded in real-time to ArcGIS Online, where it can be viewed instantly on a series of ArcGIS Online Dashboards, including a core management dashboard showing where home visits are taking place and how many misconnections have been identified to date. A separate stakeholder dashboard provides a high-level overview of the project's impact.

Learn more at: esri-ireland.ie

Esri Ireland

Dublin

Block B | Ashtown Gate
Navan Road | Dublin 15 | D15 NP9Y
T +353 (0) 1 869 3900 | F +353 (0) 1 869 3901

Holywood

Hollywood House | 1 Innis Court
Holywood | BT18 9HF
T +44 (0) 2890 767336
E mapsmakesense@esri-ireland.ie
W esri-ireland.ie

Environmental Systems Research Institute Ireland Ltd. VAT No IE 6373903G Registered in Dublin No. 353903. Registered Office: Riverside One, Sir John Rogerson's Quay, Dublin 2. All rights reserved.

The Esri globe and Esri products, services and trademarks mentioned are trademarks of Environmental Systems Research Institute, Inc. Other companies and products mentioned herein are the property of their respective trademark owners.

// ArcGIS enables us to find as many houses as possible with misconnected appliances, as efficiently as possible, to help Dublin’s rivers reach a good standard of water quality. //

Richard Fitzpatrick, Dublin Urban Rivers LIFE Project Manager, South Dublin County Council

// Project information is transparent to everyone working on the project, whether in the field or in the office. //

Briana Shiels, GIS Officer, South Dublin County Council

The Benefits

Targeted action to find misconnected appliances

Using the ArcGIS process, council employees in Dublin no longer waste time visiting properties that are unlikely to have a misconnection and instead focus their efforts in the locations that are most likely to lead to an opportunity to reduce pollution. “The driver for the project is always the quality of the rivers,” emphasises Richard Fitzpatrick, Dublin Urban Rivers LIFE Project Manager, South Dublin County Council. “ArcGIS enables us to find as many houses as possible with misconnected appliances, as efficiently as possible, to help Dublin’s rivers reach a good standard of water quality.”

Significant reduction in the discharge of polluted water

6h VY gXi gZhj a d[i] Z 9j Vbc J gWc G kZgh A> : egl ZXizVXi dc J Vh WZC iv Zc id gb dkZ dkZg. ' %b hXdccZXiZY YZk XZh Vi ~ *%Z egleZg ZhZVcY VgZhh Vh c\ YZigZci h cdl gVX c\ 9j Vbc fh gkZgh # j l J Zg J Vh WZC Vh \ c fXVci gYi Xi dc c e daj i dc Y hX Vg ZY cid gkZgh hVnh; toe VigX # } L Z Zhi b Vi Z i Vi l Z J V k Z gb dkZY Vgdj c Y ~ b aedc atgh d edaj iZY l Vhi Z l Vi Zge ZgnZVg [gdb il d gkZg VXIX] b Zcihz j h c \ dj g gX < H egl XZhh #

***% Xdhi hVkc \ [gdb b dgZ Z [[XZci egl XZhh**

x il d VcY V V d nZVghzi Z egl ZXi iZVb J Vh XVggZY dj i dkZg, z %c dj hZ cheZXi dchZVcY i Z gMIZ d [cY c\ V b hXdccZXi dc h Ydj VZ i Z c b WZgi Vi l dj a J V k Z WZC edhh WZ j h c \ i Z e g k dj h c Y hXgb c Vi Z Yddgid Yddg Vee gVX # 7 n Z m Z ch dc z i h V ad b ZVch i Vi i Z Xdhi d [cY c\ b hXdccZXi dchZ dkZgi] h hVb Z e Z g d Y z g Y XZY Vh * % Z Y Z a k Z g c \ V W Z i i Z g g i j g c d c c k Z h i b Z c i # } L Z Z h i b V i Z i V i - i d [Y d b Z h i X e g l e Z g Z h c 9 j V b c } V k Z V b h X d c c Z X i d c z Z n e a l c h ; t o e V i g X # } L Z c d l J V k Z V W Z i i Z g h n h i Z b i d e c e d c i i Z h Z e g l e Z g Z h V c Y i V Z V X i d c [V g b d g Z [[X Z c i a n l f] g g X < H # ~

HZVb aZhh XVeij gZ VcY h Vg c \ d [gZ Vai b Z Y V i V

l J Z c J Z g z c i c i Z l g V i d c d [g g X < H e g d Y X i h Z c W W Z h Y V i V i d W h Z V b a Z h h a n X V e i j g Z Y V c Y h V g Z Y c g Z V a i b Z # ; j g Z g b d g z 6 g X < H D c a c Z 9 V h V d V g h e g d k Y Z V V \ a n Z [[Z X i k Z l V n i d h V g z ~ Z n e g d Z X i b Z i g X h z ~ Z Z e c \ h z c d g b V c V l Z g h V c Y h i V Z d a Z g h V W g Z h i d [e g d \ g Z h h # } E g d Z X i c [d g b V i d c h i g / c h e V g z c i d Z k Z g n d Z l d g c \ d c i Z e g d Z X i Z l J Z i Z g c i Z [Z a d g c e i Z d [[X Z z h V n h 7 g V c V H] Z h z < H D [[X Z g V i H d j i 9 j V b c 8 d j c i n 8 d j c X a #

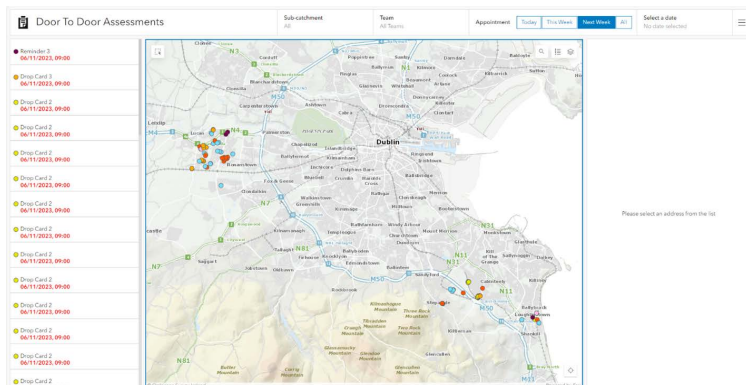
: Vh a n g Z e a X V i Z Y h d j i d c [d g j h Z a h Z l J Z g z

l J Z e g d Z X i i Z V b J V h c d l X g Z V i Z Y V l a t Z f k Z g h d c d [h 6 g X < H l V i Z g b V c V l Z b Z c i h d j i d c i V i X V c W Z V h a n e X Z Y j e V c Y j h Z Y V h V [d j c Y V i d c h i d c Z W h d i Z g a d X V a V j i j d g t Z h # } 8 j h i d b l l g f i Z c h d j i d c h X V c X d h i j j c Y g Z Y h d [i d j h V c Y h d [: j g l h V c Y W Z V Y h V h i Z g z b j h Z h ; t o e V i g X # } L l J g g X < H Z l Z J V k Z W j a V g Z e a X V W Z z h i V c Y V g y h d j i d c l f] e g d Y j X i h i V i b d h i a d X V a V j i j d g t Z h c ~ g Z a c Y ~ c d l V c Y j h Z V a g Z V Y n #

Esri Ireland
 Dublin
 Block B | Ashtown Gate
 Navan Road | Dublin 15 | D15 NP9Y
 T +353 (0) 1 869 3900 | F +353 (0) 1 869 3901
 Hollywood
 Hollywood House | 1 Innis Court
 Hollywood | BT18 9HF
 T +44 (0) 2890 767336
 E mapsmakesense@esri-ireland.ie
 W esri-ireland.ie

Environmental Systems Research Institute Ireland Ltd. VAT No IE 6373903G Registered in Dublin No. 353903. Registered Office: Riverside One, Sir John Rogerson's Quay, Dublin 2. All rights reserved.

The Esri globe and Esri products, services and trademarks mentioned are trademarks of Environmental Systems Research Institute, Inc. Other companies and products mentioned herein are the property of their respective trademark owners.



Screenshot of the ArcGIS Online Dashboard field staff use when carrying out domestic misconnection assessments